



# DEVICEMASTER® Serial to Ethernet Device Servers

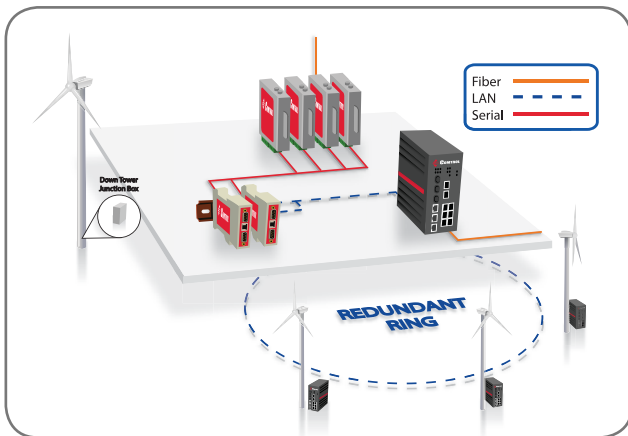


## ABOUT DEVICEMASTER PRODUCTS

The DeviceMaster® family of serial to Ethernet device servers enable superior device networking capabilities. Connect RS-232/422/485 serial devices to the network with DeviceMaster using your existing software applications. Supports native COM, TTY, or TCP/IP socket communications. Control's DeviceMaster products feature enhanced security offering SSL & SSH management and SSL serial data stream encryption.

DeviceMaster, offers the industry's most extensive selection of products for network-enabling serial devices. Ranging from 1-port models that provide single-device networking to 32-port models that offer high-density connections for specialized applications.

The standard 1, 2, 4, and 8 port DeviceMaster RTS and PRO products are also NEMA TS2 compliant, withstanding temperatures ranging from -34° to 74° degrees Celsius, at no additional cost. The DeviceMaster has been ruggedized to handle extreme temperatures, operating voltage and humidity fluctuation, vibration and shock commonly experienced in severe outdoor environments.



## DEVICEMASTER APPLICATIONS

Control's DeviceMaster products provide intelligent, ruggedized communication solutions in these core markets:

- |                            |           |
|----------------------------|-----------|
| Traffic and Transportation | Security  |
| Industrial Automation      | Broadcast |
| Government and Defense     | Medical   |
| Power and Utilities        | Gaming    |

**DeviceMaster RTS** | DeviceMaster RTS is designed for device networking versatility. The RTS offers software-selectable ports (RS-232/422/485) as well as the ability to host local embedded programs that are commonly used for intermediate serial data processing, protocol conversion, and other data-centric applications.

**DeviceMaster PRO** | DeviceMaster PRO is our top-of-the-line device server. The DeviceMaster PRO can also be deployed in harsh or electrically noisy environmental conditions because it delivers an unequalled 25KV surge protection on each serial port. The PRO also has software-selectable ports (RS-232/422/485).

**DeviceMaster Serial Hub** | DeviceMaster Serial Hubs are ideally suited for in-server multi-port card replacement when RS-232 serial devices are located remotely from the PC hosting your application. Serial Hubs are available in 8- and 16-port models, which are the most popular port-density configurations for in-server multi-port cards.



For more information visit [www.control.com](http://www.control.com)

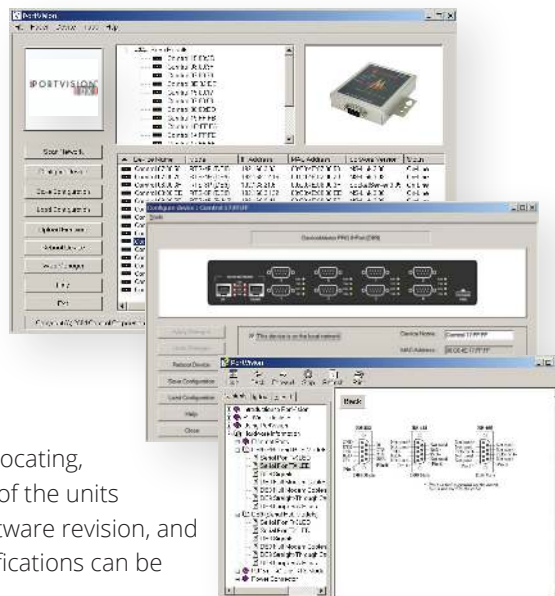
**connect. communicate. control.**

## PORTVISION® DX - MANAGEMENT CONSOLE

All DeviceMaster models can be set up, configured, and managed over the network using a standard Web browser. The challenge comes when multiple units are deployed.

To address this challenge, Control offers PortVision DX- a powerful management console that preserves the efficiency and low cost-of-ownership benefits of DeviceMaster regardless of the number of units to be managed. PortVision DX can be used to automatically “discover” DeviceMaster units across the network and configure one or all of them using user-defined parameters.

With PortVision DX, administration of your DeviceMasters is simple. Once installed on your PC running Microsoft Windows, you can immediately begin locating, configuring, and organizing your network-attached DeviceMaster units. Each of the units on the network is graphically depicted along with its IP and MAC address, software revision, and operating status. Images of each model can be displayed and technical specifications can be instantly accessed to ensure the unit is configured as required.



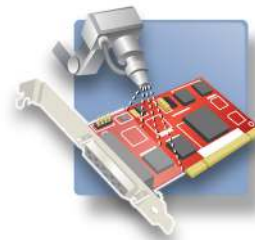
## CONFORMAL COATING

Conformal coating is a protective non-conductive dielectric layer that is applied onto the printed circuit board assembly to protect the electronic assembly from damage due to contamination, salt spray, moisture, fungus, dust, and corrosion caused by harsh or extreme environments.

It is most commonly applied to products that are used in outdoor environments where heat and moisture are prevalent. Coating may also prevent damage from rough handling, installation, reduction of mechanical and thermal stress. It also acts to protect circuitry and components from abrasion and solvents.

Control offers three different types of Conformal Coatings:

- Silicone (Dow 1-2577)
- Urethane (Conap CE1155)
- Acrylic (Humiseal 1B73)



Visit Control's website at [www.comtrol.com](http://www.comtrol.com) for more detailed individual model specifications.



### Warranty Information

Control offers a 30-day satisfaction guarantee and 5-year limited warranty.

### Sales Support

+1.763.957.6000  
sales@comtrol.com

### Technical Support

+1.763.957.6000  
www.comtrol.com/support

### Email, FTP, and Web Support

info@comtrol.com  
ftp.comtrol.com  
www.comtrol.com